

# 1084 Comfort Nest Baby Bassinet



1084

According to mammalian neuroscience, the intimate contact between a mother and newborns even post-birth evokes neuro-behaviors ensuring fulfillment of basic biological needs. It's during these initial moments and days that the foundation for future physiology and behavior is laid, all through the simple yet profound act of skin-to-skin contact (SSC) between a mother and her newborn. This time frame immediately post-birth may represent a 'sensitive period' for programming future physiology and behavior.

The Midmark 1084 Comfort Nest Baby Bassinet for newborns offers safety for infants, facilitating effective caregiving by promoting SSC by ensuring that the baby is under constant supervision and in reach of the mother. Its highly practical design simplifies the process for both caregivers and mothers in attending to the needs of newborns, thereby providing state-of-the-art equipment for the maternity units.

## Features



### Cozy Bassinet Design

Facilitates to keep newborn safe and cozy



### Seamless Positioning

Stepless adjustment of tilt aids in seamlessly achieving the desired clinical positioning



### Peace of Mind

Offers stability support in an unlikely event of a gas spring malfunction.



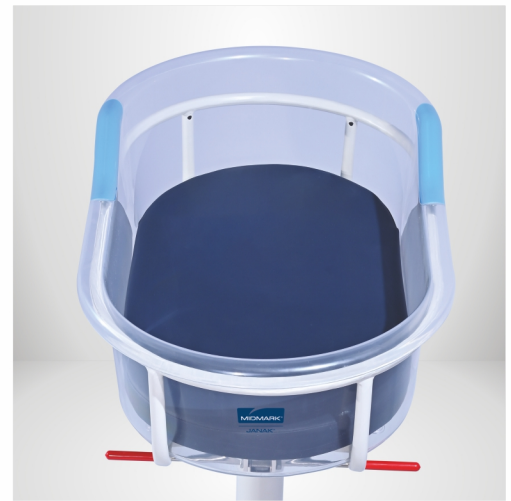
### Smooth & Safe Mobility

Equipped with strong castors with individual locking for secure transfers and parking.



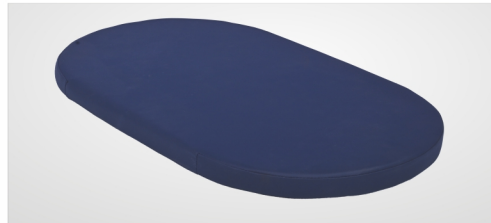
### Breathable & Hygienic Design

Breathable and washable basket with perforations for ventilation & easy disinfection



### Gentle Rest Basket

Eco-friendly biocompatible ABS material, clear in view fortified with a strong frame



### Safe Sleep Mattress

Mattress is anti-bacterial, anti-fungal and fire retardant.



### Utility Tray

Designed to hold baby's essentials

## Technical Specifications

- Overall dimensions\*  
870 mm x 545 mm x 1075 mm L x W x H
- Basket size\*  
846 mm x 510 mm x 250 mm L x W x H
- Mattress dimensions\*  
745 mm x 390 mm L x W
- Mattress thickness\* 50 mm
- Gas spring assisted tilt function
- Tilt angle up to 12<sup>0\*\*</sup>
- Safe working load 10 kg
- MS tubular framework with non-rusting castors
- SS utility tray



### Enhanced Bonding Experience

Placing the bassinet near the mother enhances monitoring, bonding and eases feeding and soothing

\*± 10 mm Engineering Variation and

\*\* ± 2° Engineering Variation

We are interested in growing relationship



### Midmark (India) Private Limited

Head Office: Art Guild House, FOF, B-16, "B" Wing, 4th floor, Phoenix Market City, LBS Road, Kurla (West), Mumbai - 400 070  
Toll Free: 1800 22 8020 | Tel: +91 22 4915 3000 | Fax: +91 22 4915 3100 | www.midmark.in | india@midmark.com

1084:00:19.04.24

